

part of Conrad Miller's
Survey, now of
Fred^r Leibelsberger.

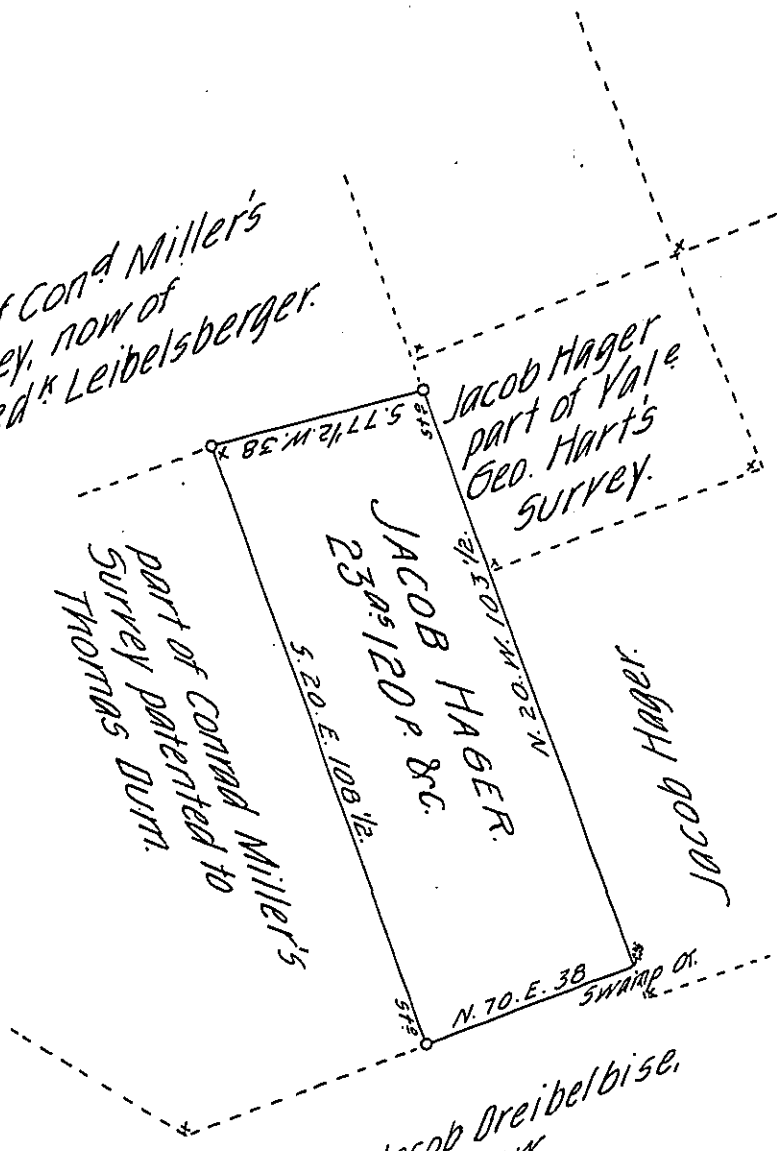
part of Conrad Miller's
Survey patented to
THOMAS DUMM.

JACOB HA GER.
230^{as} 120 p. &c.

Jacob Hager
part of Yale
Geo. Hart's
Survey.

Jacob Hager

late Jacob Dreibelbise,
now
Geo. Fegely.



Situate in Richmond township, Berks County, Containing twenty three acres,
 one hundred and twenty perches, and allowance of 6^{sq} Ct part of A^s 107 104 p^s -
 Surveyed on-Warrant dated February 22 1748, granted to Conrad Miller,
 Resurveyed for Jacob Hager. January 26. 1828.

Matthias S. Richards, D.S.

Gabriel Hiester, Esq^r }
 Surveyor General. }

IN TESTIMONY that the above is a copy of the original remaining on file in
 the Department of Internal Affairs of Pennsylvania, made
 conformably to an Act of Assembly approved the 16th day of
 February, 1833, I have hereunto set my Hand and caused
 the Seal of said Department to be affixed at Harrisburg,
 this twenty-fourth day of May 1905.

George R. Brown
 Secretary of Internal Affairs.